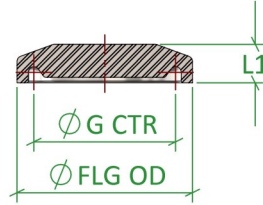
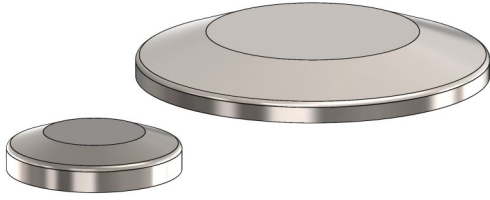
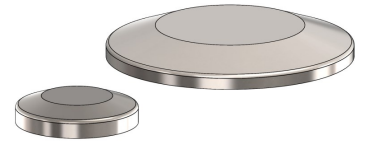
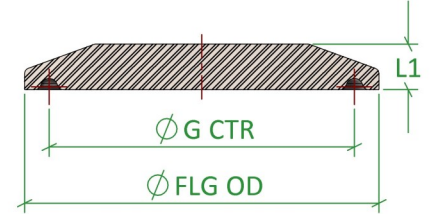


ASME BPE Fittings

DT-4.1.5-2 (DT31) TC Blanks



FERRULE PROFILE
FOR SIZES WITH A 25.4mm
FLG OD ONLY



FERRULE PROFILE
FOR SIZES WITH A 34.0mm
FLG OD & ABOVE

Standard	ASME BPE 2016	Certification	EN10204 3.1
Connections	TC Fitting	Associated Parts	DT22 TC Ferrules
Material	316L Stainless Steel EN 1.4404	Associated Standards	ASME BPE 2009 & 2012
Surface Finish	SF1-0.51Ra μm Max	Options	SF4-0.38Ra μm Max E/Polished On Request
Remarks	Blanks Can Be Bored To Custom Sizes On Request		

ASME BPE Fittings, DT-4.1.5-2 (DT31), TC Blank

Size (inch)	FLG OD (mm)				G CTR (mm)	L1 (min) (mm)	Part Code
0.500"	25.40				20.30	4.75	BPE.DT31.0050.SF1
0.750"	25.40				20.30	4.75	BPE.DT31.0075.SF1
1.000"	50.50				43.64	6.35	BPE.DT31.0100.SF1
1.500"	50.50				43.64	6.35	BPE.DT31.0150.SF1
2.000"	64.00				56.34	6.35	BPE.DT31.0200.SF1
2.500"	77.50				70.64	6.35	BPE.DT31.0250.SF1
3.000"	91.00				83.34	6.35	BPE.DT31.0300.SF1
4.000"	119.00				110.34	7.92	BPE.DT31.0400.SF1
6.000"	167.00				156.87	11.10	BPE.DT31.0600.SF1

Published Data Is Given in Good Faith. We Reserve the Right To, Without Warning Change the Dimensions When Not In Conflict With The Published Standard

Flowsource Process Fittings Ltd

Unit 4 Marrtree Business Park, Cedar Road, Sowerby, Thirsk, North Yorkshire, YO7 3FF, United Kingdom
[T] 01535 274 316 - [e] sales@flowsourcepf.com - [w] www.flowsourcepf.com

FLOWSOURCE
PROCESS FITTINGS