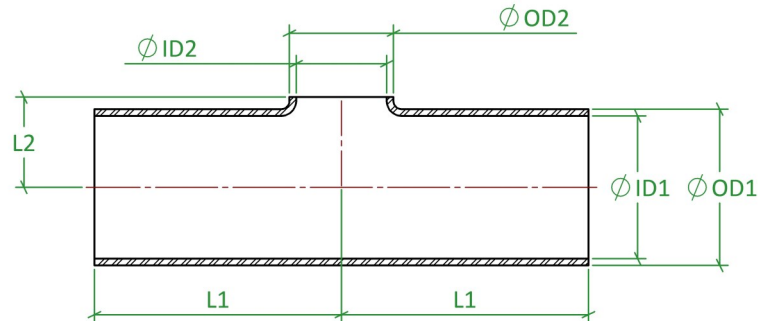
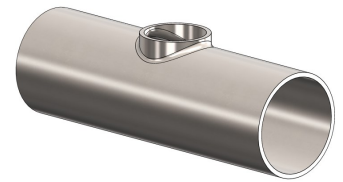


Weld End Fittings

Reducing Tees, BS4825-2



Standard	BS4825-2	Certification	EN10204 3.1
Connections	Weld Ended	Associated Parts	Tube BS4825-1, Fittings BS4825-2, TC BS4825-3
Material	316L Stainless Steel EN 1.4404	Associated Standards	BS4825-1, BS4825-2, BS4825-3, ASME BPE
Surface Finish	Dull Polish	Options	Descaled, Non Standard Sizes, Duplex Materials
Remarks			

Weld End Fittings, BS4825-2, Reducing Tee

Size (inch) Main Line X Branch	OD1 (mm)	ID1 (mm)	OD2 (mm)	ID2 (mm)	L1 (mm)	L2 (mm)	Part Code
1.500" X 1.000"	38.10	34.80	25.40	22.10	63.50	22.00	WTR.BS.0150.0100.6P
2.000" X 1.000"	50.80	47.50	25.40	22.10	88.50	29.00	WTR.BS.0200.0100.6P
2.000" X 1.500"	50.80	47.50	38.10	34.80	88.50	29.00	WTR.BS.0200.0150.6P
2.500" X 1.000"	63.50	60.20	25.40	22.10	113.50	35.00	WTR.BS.0250.0100.6P
2.500" X 1.500"	63.50	60.20	38.10	34.80	113.50	35.00	WTR.BS.0250.0150.6P
2.500" X 2.000"	63.50	60.20	50.80	47.50	113.50	35.00	WTR.BS.0250.0200.6P
3.000" X 1.000"	76.20	72.90	25.40	22.10	133.50	41.00	WTR.BS.0300.0100.6P
3.000" X 1.500"	76.20	72.90	38.10	34.80	133.50	41.00	WTR.BS.0300.0150.6P
3.000" X 2.000"	76.20	72.90	50.80	47.50	133.50	41.00	WTR.BS.0300.0200.6P
3.000" X 2.500"	76.20	72.90	63.50	60.20	133.50	41.00	WTR.BS.0300.0250.6P
4.000" X 1.000"	101.60	97.38	25.40	22.10	173.50	55.00	WTR.BS.0400.0100.6P
4.000" X 1.500"	101.60	97.38	38.10	34.80	173.50	55.00	WTR.BS.0400.0150.6P
4.000" X 2.000"	101.60	97.38	50.80	47.50	173.50	55.00	WTR.BS.0400.0200.6P
4.000" X 2.500"	101.60	97.38	63.50	60.20	173.50	55.00	WTR.BS.0400.0250.6P
4.000" X 3.000"	101.60	97.38	76.20	72.90	173.50	55.00	WTR.BS.0400.0300.6P

Published Data Is Given in Good Faith. We Reserve the Right To, Without Warning Change the Dimensions When Not In Conflict With The Published Standard

Flowsource Process Fittings Ltd

Unit 4 Marrtree Business Park, Cedar Road, Sowerby, Thirsk, North Yorkshire, YO7 3FF, United Kingdom
 [T] 01535 274 316 - [e] sales@flowsourcepf.com - [w] www.flowsourcepf.com

FLOWSOURCE
PROCESS FITTINGS