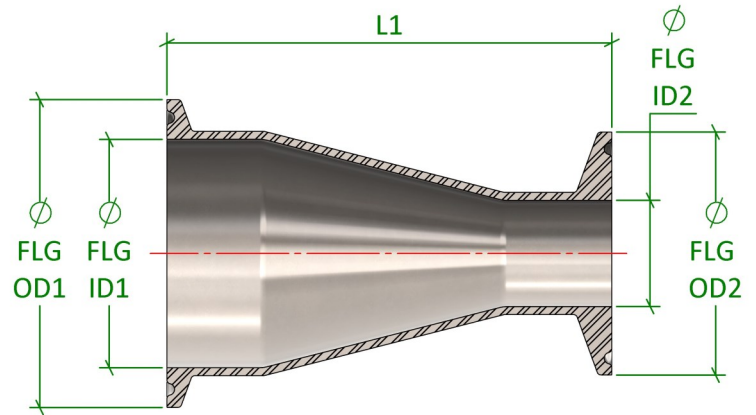
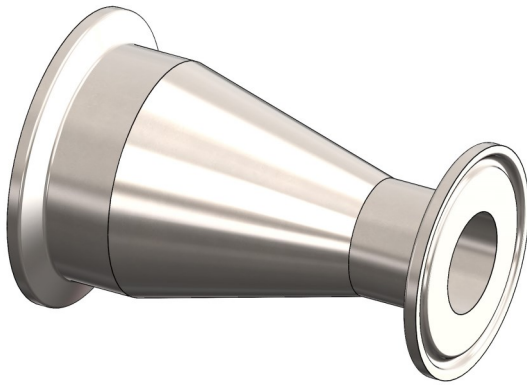
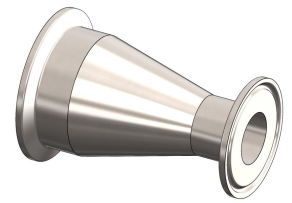


ASME BPE Fittings

DT-4.1.3-3 (DT21C) Concentric Reducer, Clamp Ended



Standard	ASME BPE 2016 & 2022	Certification	EN10204 3.1
Connections	TC (Clamp) Ended	Associated Parts	All ASME BPE Fittings
Material	316L Stainless Steel EN 1.4404	Associated Standards	ASME BPE 2009 & 2012, BS4825-3
Surface Finish	SF1 = (0.51Ra μm Max)	Options	SF4 = (0.38Ra μm Max Electro-Polished)
Remarks	Duplex Materials On Request		

ASME BPE Fittings, DT-4.1.3-3 (DT21C), Concentric Reducer, TC Ended

Size (inch) Clamp X Clamp	FLG OD1 (mm)	FLG ID1 (mm)	FLG OD2 (mm)	FLG ID2 (mm)	L1 (mm)	Part Ordering Code
0.75" X 0.50"	25.4	15.9	25.4	9.4	79.4	BPE.DT21C.0075.0050.SF1
1.00" X 0.50"	50.5	22.1	25.4	9.4	88.9	BPE.DT21C.0100.0050.SF1
1.00" X 0.75"	50.5	22.1	25.4	15.8	79.4	BPE.DT21C.0100.0075.SF1
1.50" X 0.75"	50.5	34.8	25.4	15.8	101.6	BPE.DT21C.0150.0075.SF1
1.50" X 1.00"	50.5	34.8	50.5	22.1	88.9	BPE.DT21C.0150.0100.SF1
2.00" X 1.00"	64.0	47.5	50.5	22.1	111.1	BPE.DT21C.0200.0100.SF1
2.00" X 1.50"	64.0	47.5	50.5	34.8	88.9	BPE.DT21C.0200.0150.SF1
2.50" X 1.50"	77.5	60.2	50.5	34.8	111.1	BPE.DT21C.0250.0150.SF1
2.50" X 2.00"	77.5	60.2	64.0	47.5	88.9	BPE.DT21C.0250.0200.SF1
3.00" X 1.50"	91.0	72.9	50.5	34.8	133.4	BPE.DT21C.0300.0150.SF1
3.00" X 2.00"	91.0	72.9	64.0	47.5	111.1	BPE.DT21C.0300.0200.SF1
3.00" X 2.50"	91.0	72.9	77.5	60.2	92.1	BPE.DT21C.0300.0250.SF1
4.00" X 2.00"	101.6	97.4	64.0	47.5	158.8	BPE.DT21C.0400.0200.SF1
4.00" X 2.50"	101.6	97.4	77.5	60.2	136.5	BPE.DT21C.0400.0250.SF1
4.00" X 3.00"	101.6	97.4	91.0	72.9	127.0	BPE.DT21C.0400.0300.SF1

Published Data Is Given in Good Faith. We Reserve the Right To, Without Warning Change the Dimensions When Not In Conflict With The Published Standard

Flowsource Process Fittings Ltd

Unit 4 Marrtree Business Park, Cedar Road, Sowerby, Thirsk, North Yorkshire, YO7 3FF, United Kingdom
 [T] 01535 274 316 - [e] sales@flowsourcepf.com - [w] www.flowsourcepf.com

FLWSOURCE
PROCESS FITTINGS