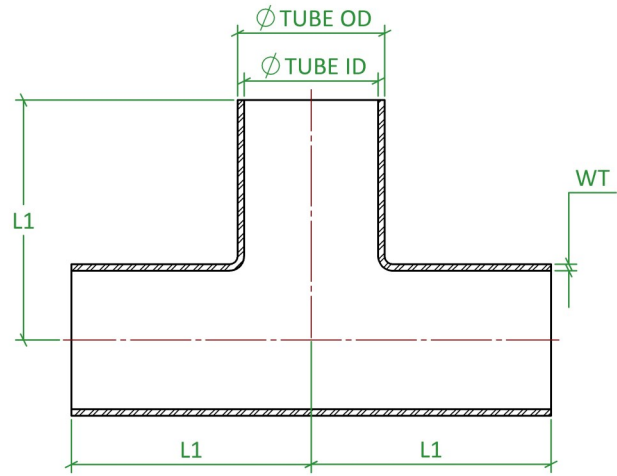
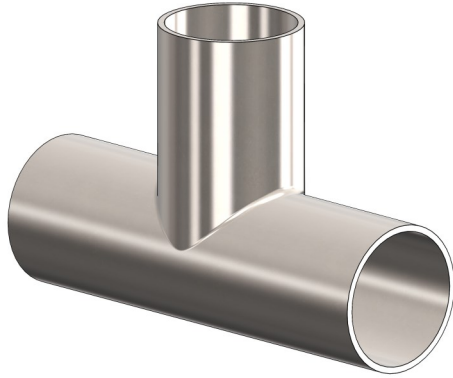
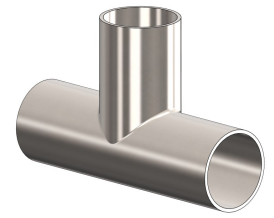


ASME BPE Fittings

DT-4.1.2-1 (DT9) Equal Tee, Weld Ended



| | | | |
|-----------------------|--------------------------------|-----------------------------|---|
| Standard | ASME BPE 2016 | Certification | EN10204 3.1 |
| Connections | Weld Ended | Associated Parts | DT1 Tube, DT22 TC Ferrules |
| Material | 316L Stainless Steel EN 1.4404 | Associated Standards | ASME BPE 2009, 2012 |
| Surface Finish | SF1—0.51Ra µm Max | Options | SF4—0.38Ra µm Max E/Polished On Request |
| Remarks | | | |

| ASME BPE Fittings, DT-4.1.2-1 (DT9) Equal Tee, Weld Ended | | | | | | | |
|---|--------------|--------------|---------|--|--|---------|-------------------|
| Size (inch) | TUBE OD (mm) | TUBE ID (mm) | WT (mm) | | | L1 (mm) | Part Code |
| 0.500" | 12.70 | 9.40 | 1.65 | | | 47.63 | BPE.DT09.0050.SF1 |
| 0.750" | 19.05 | 15.75 | 1.65 | | | 50.80 | BPE.DT09.0075.SF1 |
| 1.000" | 25.40 | 22.10 | 1.65 | | | 53.98 | BPE.DT09.0100.SF1 |
| 1.500" | 38.10 | 34.80 | 1.65 | | | 60.33 | BPE.DT09.0150.SF1 |
| 2.000" | 50.80 | 47.50 | 1.65 | | | 73.03 | BPE.DT09.0200.SF1 |
| 2.500" | 63.50 | 60.20 | 1.65 | | | 79.38 | BPE.DT09.0250.SF1 |
| 3.000" | 76.20 | 72.90 | 1.65 | | | 85.73 | BPE.DT09.0300.SF1 |
| 4.000" | 101.60 | 97.38 | 2.11 | | | 104.78 | BPE.DT09.0400.SF1 |
| 6.000" | 152.40 | 146.86 | 2.77 | | | 142.88 | BPE.DT09.0600.SF1 |

Published Data Is Given in Good Faith. We Reserve the Right To, Without Warning Change the Dimensions When Not In Conflict With The Published Standard

Flowsource Process Fittings Ltd

Unit 4 Marrtree Business Park, Cedar Road, Sowerby, Thirsk, North Yorkshire, YO7 3FF, United Kingdom
 [T] 01535 274 316 - [e] sales@flowsourcepf.com - [w] www.flowsourcepf.com

FLOWSOURCE
PROCESS FITTINGS