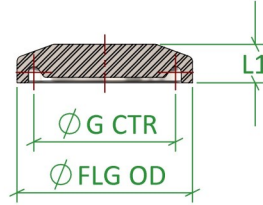
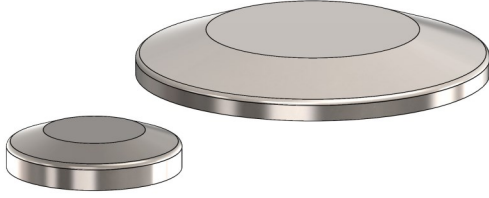
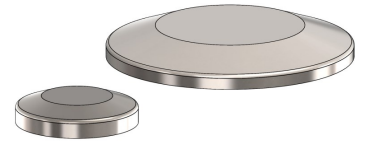
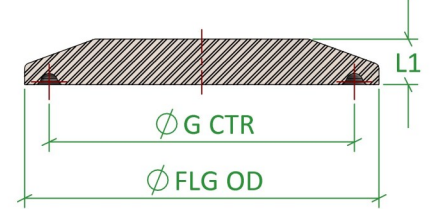


Tri-Clamp Fittings

TC Blanks, Universal, Imperial Size



FERRULE PROFILE
FOR SIZES WITH A 25.4mm
FLG OD ONLY



FERRULE PROFILE
FOR SIZES WITH A 34.0mm
FLG OD & ABOVE

Standard	BS4825-3, Universal Size	Certification	EN10204 3.1
Connections	TC Fitting	Associated Parts	TC, Ferrule TC Clamp, TC Gasket
Material	316L Stainless Steel EN 1.4404	Associated Standards	All TC Standards
Surface Finish	0.8Ra Internal Wetted Surfaces	Options	Bored Holes, Duplex Materials
Remarks	TC Blanks Suit All TC Ferrule Standards, Blanks Can Be Bored To Custom Sizes On Request		

TC Fittings, TC Blank, Imperial Size / Suits All TC Standards

Size (inch)	FLG OD (mm)	G CTR (mm)	L1 (mm)	Part Code
0.500"-0.750"	25.40	20.30	5.60	CB.BS.0050-0075.6
1.000"-1.500"	50.50	43.50	7.00	CB.BS.0100-0150.6
2.000"	64.00	56.50	7.00	CB.BS.0200.6
2.500"	77.50	70.50	7.00	CB.BS.0250.6
3.000"	91.00	83.50	7.00	CB.BS.0300.6
3.500"	106.00	97.00	7.00	CB.BS.0350.6
4.000"	119.00	110.00	9.00	CB.BS.0400.6
4.500"	130.00	122.00	9.00	CB.BS.0450.6
5.000"	144.40	135.00	10.00	CB.BS.0500.6
5.500"	155.00	146.00	10.00	CB.BS.0550.6
6.000"	167.00	156.50	10.00	CB.BS.0600.6
6.580"	183.00	174.00	10.00	CB.BS.0658.6
8.000"	217.40	207.40	10.00	CB.BS.0800.6
8.580"	233.50	225.00	10.00	CB.BS.0858.6
10.000"	268.00	258.00	10.00	CB.BS.1000.6
10.750"	286.10	276.00	10.00	CB.BS.1075.6
12.000"	319.00	308.00	10.00	CB.BS.1200.6
12.750"	338.00	329.00	10.00	CB.BS.1275.6

Published Data Is Given in Good Faith. We Reserve the Right To, Without Warning Change the Dimensions When Not In Conflict With The Published Standard

Flowsource Process Fittings Ltd

Unit 4 Marrtree Business Park, Cedar Road, Sowerby, Thirsk, North Yorkshire, YO7 3FF, United Kingdom
[T] 01535 274 316 - [e] sales@flowsourcepf.com - [w] www.flowsourcepf.com

FLWSOURCE
PROCESS FITTINGS